

Unlocking Human Power

*The role of social entrepreneurship and innovation
in sustainable development*

Indira Kartallozi



www.chrysalisfamilyfutures.com



Indira_karta



indira@chrysalisfamilyfutures.com

How can business respond?



Traditional
CHARITY

SOCIAL VALUE

Charitable funds &
Grants

Government funded

SOCIAL IMPACT +
FINANCIAL RETURN



Social
ENTERPRISE

Potentially self sustaining

Mission driven for profit

Profits are reinvested



Traditional
BUSINESS

FINANCIAL VALUE

Profit driven
Orientation

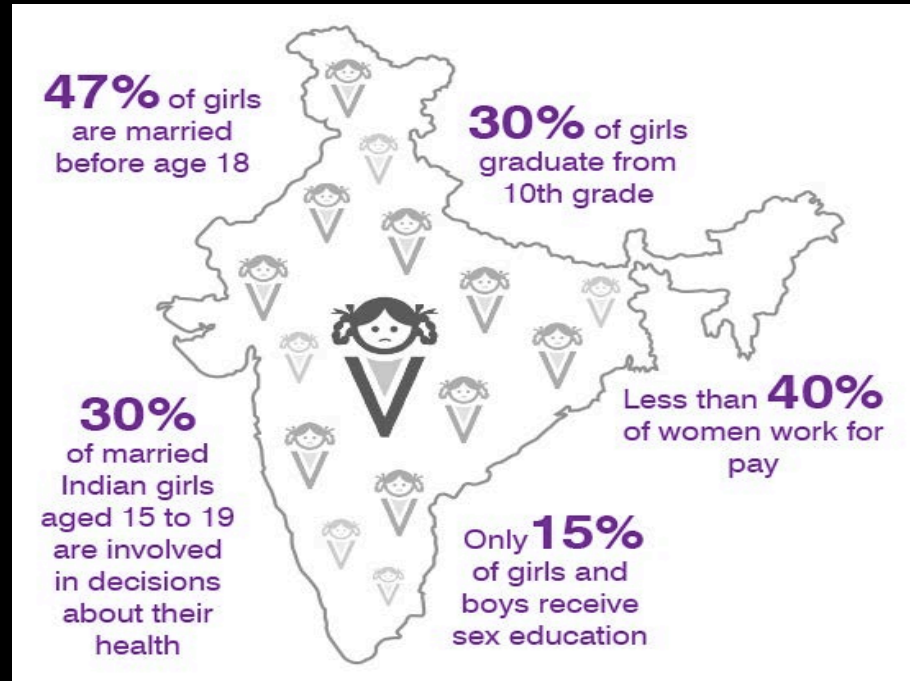
Mainstream investors

CSR and Corporate
Philanthropy

Social **b**usiness models



India: Voice4Girls

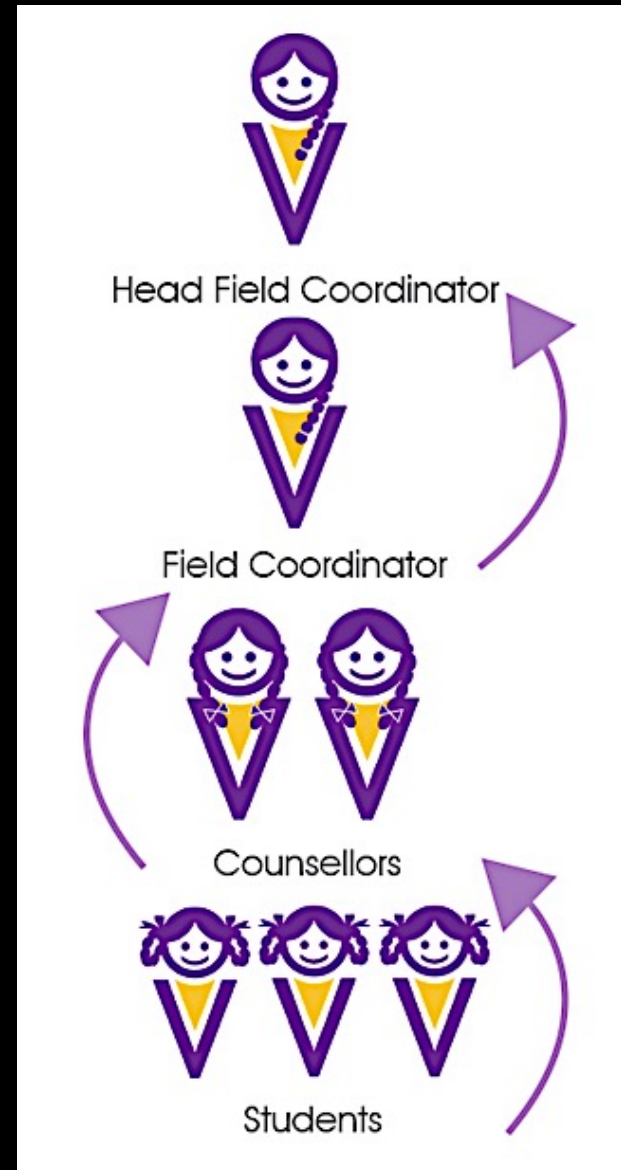


VISION:

All girls will take charge of their futures, And work towards breaking harmful cycles of economic, social, and gender inequality in their communities



ACTIVITY BASED CAMPS



Cambodia: Friends International



Protects

Reintegrate

Prevents

Improves

Influences

Working with **f**amilies, we empower them to support themselves, so that they no longer need to send their **c**hildren to work



All year round, 24/7 the Friends-International teams go where at-risk children and **y**outh live and work and provide essential services including health care, shelter, food, specialized services (drug prevention, HIV care...), emergency support and teach them how to **p**rotect themselves.

In order to bring about a solution to this situation, the traditional charity model is not efficient enough and needs to be replaced by new models that combine the best of the NGO work and the best of the **b**usiness world



Social enterprise and **i**nnovation



UNHCR
The UN Refugee Agency

“The reasonable man adapts himself to the world: the unreasonable one persists in trying to adapt the world to himself. Therefore all progress depends on the unreasonable man.”

George Bernard Shaw

